



Niitaka's pouch-packaged cleaning agents are registered with the Ministry of the Environment's "Plastics Smart" campaign. Niitaka is helping to reduce marine plastics.

# Everyday Cleaning Made Easier!! Better!!



Commercial Use

Alkaline

Chemifine

Kitchen/Store Cleaner

## Quick Rinse

5x Concentrated

- Includes disinfecting agents for combined cleaning and disinfection\*.
- Now with an antifoaming compound. Foam dissipates quickly during rinsing to also help save water.
- Recommended for cleaning floors

\*Not effective against all types of germs.

1 kg

Also  
Disinfects

業務用

厨房・店舗用洗浄剤

毎日の洗浄がラクに!!

ケミファイブ 油汚れ落とし  
Heavy duty degreaser

クイックすすぎ

Chemifine Quick Rinse  
5倍濃縮タイプ

床の洗浄においてすすぎ時間を大幅に低減し、水の使用量を削減

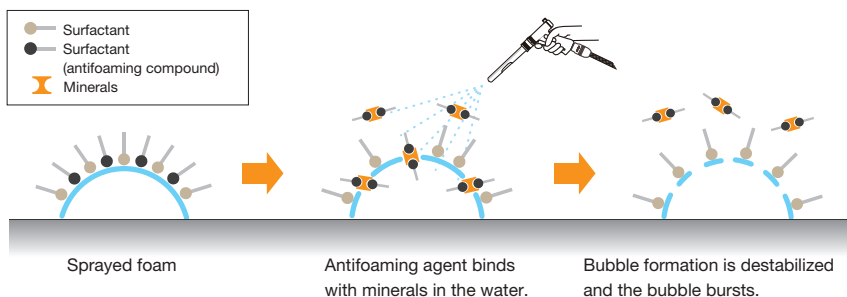
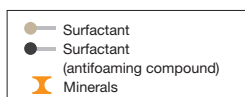
1kg

NIITAKA

Scan for  
info ▶



### "Antifoaming Compound" Defoaming Mechanism



### Essential Products for Better Performance

## Water-Powered Foam Sprayer S



(Product code: 901084)



● Foam sprayer  
stop valve (large)  
(Product code: 901199)

● Foam sprayer  
stop valve (small)  
(Product code: 901198)



● Water-Powered Foam  
Sprayer S dedicated  
extension nozzle  
(Product code: 901082)

Assembly  
guide ▶



## No Scrubbing Required\*

Chemifine Quick Rinse

Great results, without scrubbing!!



Cleaning agent A  
(third party)

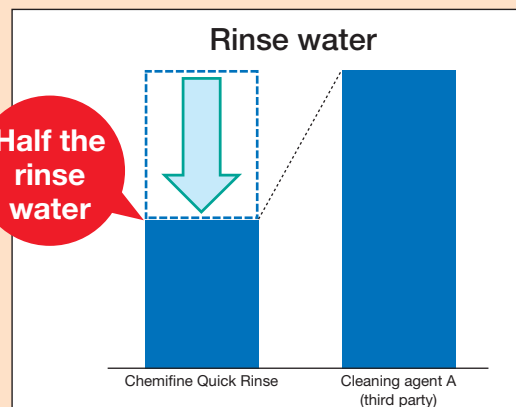


A stainless steel surface was coated with a red-pigmented oil to simulate grease. The oil-coated surface was then coated with cleaning agent using a water-powered foam sprayer and rinsed with running water after 40 seconds.

\*Scrubbing may be required depending on dirt adhesion and floor conditions.

## Water Savings

Half the  
rinse  
water

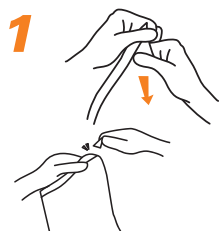


A water-powered foam sprayer was used to cover a sink with cleaning agent, the sink was rinsed with running water until no foam remained, and the amount of rinse water used was compared.

## Instructions for Use

5

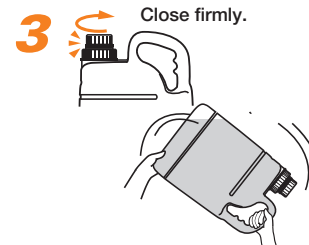
### Making a 5-fold dilution



Use your fingers to move the cleaning agent away from the corner of the bag, then cut the indicated corner of the bag.



Place the cut corner of the bag in a bottle and squeeze the cleaning agent from the bag into the bottle.



Close firmly.

Close both the narrow-neck cap and the wide-neck cap and mix thoroughly.

## Precautions for Use

- Always read the "Instructions for Use" and "Precautions for Use" printed on the product before use.
- Always use the Water-Powered Foam Sprayer S with a water pressure resistant hose.

### Product Data

Product Name	Chemifine Quick Rinse 1K (single package)	Chemifine Quick Rinse 5L wide-necked dilution bottle
Packaging	1 kg pouch × 6 pouches/case	5 L wide-necked soft bottle × 4 units/case
Product Dimensions	See image below	206 mm × 132 mm × 307 mm
Case Dimensions	280 mm × 260 mm × 165 mm	419 mm × 277 mm × 322 mm
Stacking Limit	3 cases	
Product Code	294061	901451
JAN Code	4975657236170	4975657981445
ITF Code	14975657236177	14975657981442

\*Listed dimensions are design values for width × depth × height.

### Ingredients Label, etc.

◆ Acidity/Alkalinity	Alkaline
◆ Ingredients	Alkaline agent (monoethanolamine), surfactant (alkylamine oxide), solvent, disinfectant, foam stabilizer, metal ion sequestrant
◆ Suggested Amount	<p>&lt;Starting from undiluted product&gt;</p> <p>Foam cleaning with Water-Powered Foam Sprayer S: Dilute a 5-fold dilution a further 10-50 times</p> <p>Stubborn dirt: Transfer 5-fold dilution directly to spray bottle Normal dirt: Use 20 to 200 g of 5-fold dilution in 1 L of water Minimal dirt: Use 10 to 20 g of 5-fold dilution in 1 L of water</p>

\*The appearance and labeling of this product may be altered without notice.

### External pouch dimensions



Spray bottle  
Product code: 900086



Dedicated dilution bottle

\*When using the Water-Powered Foam Sprayer S with a 100-fold dilution, 1 kg of the product will clean approx. 80 to 100 m<sup>2</sup>.