

Neutral

# More ECO-Friendly than Bottles

Commercial Use  
Public Bath/Bathtub Cleaner

## Bath Cleaner Conc

Great Value!

One pouch holds the equivalent of 5 kg of bath cleaner

Wash basin/  
bowl grime

Also Disinfects\*

Floor grime

Bathtub grime

Effective at removing grime from public baths and bathtubs and effective at removing soap residue. Dilutes **5-fold** for cost effectiveness.

### Features

#### Great Cleaning Performance!

Great cleaning performance even as a 5-fold dilution. Clean the whole public bath with this single product. **Also disinfects.\***

#### Eco-Friendly!

The pouch packaging substantially reduces the amount of waste compared to a bottled product. The concentrated formulation also saves on CO<sub>2</sub> during transport.

#### Easy to Use!

The unique pouch packaging provides easy filling of the dedicated dilution bottle. A specially designed, easy-to-fill wide-necked spray bottle is also available.

\*Not effective against all germs.

### Comparison of plastic usage

Plastic usage reduced by over 80%!



Plastic usage  
140 g \*1



Bath Cleaner Conc  
1 kg pouch

Plastic usage  
24 g \*2

\*1: Data from our standard product

\*2: Calculated based on a plastic pouch weight of 10 g and assuming a 5 L dilution bottle (140 g) is used 10 times so around 14 g of plastic is used per dilution.

Pouch packaging produces a smaller volume of waste. The dilution bottle can also be used multiple times.

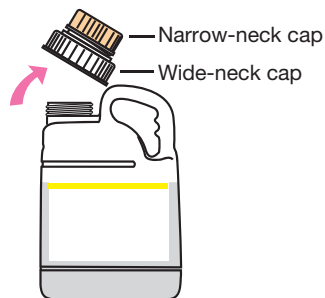
## Instructions for Use

⚠ Always wash containers after performing a dilution

# ×5 Making a 5-fold dilution

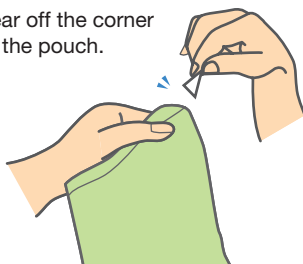
Dedicated dilution bottle

Open the lower wide-neck cap.  
Fill the bottle with tap water to  
the water fill line on the label.



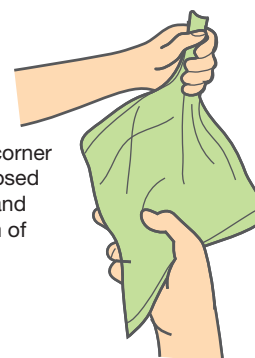
2

Tear off the corner  
of the pouch.

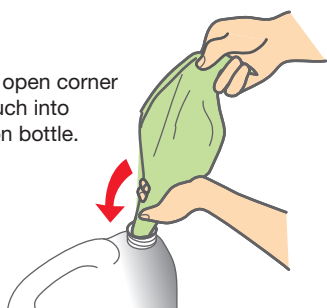


3

Hold the open corner  
of the pouch closed  
with one hand and  
hold the bottom of  
the pouch with  
the other hand.

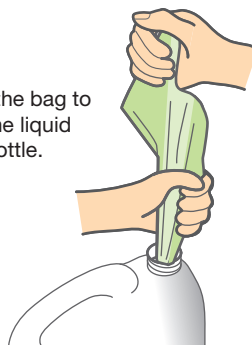


Insert the open corner  
of the pouch into  
the dilution bottle.



5

Squeeze the bag to  
transfer the liquid  
into the bottle.



6

Close both the narrow-neck cap and  
the wide-neck cap and mix thoroughly.



## Cleaning

### Bathtub/Mirror/Wash basin/Chair

Transfer the 5-fold dilution directly to  
the dedicated spray bottle.

- (1) Spray the detergent and leave for  
several minutes.
- (2) Scrub with a sponge or scouring pad.
- (3) Rinse with running water.

### Floor

Dilute the 5-fold dilution a further  
2 to 10 times.

- (1) Prepare the diluted detergent in  
a bucket and spread on the floor.
- (2) Scrub with a deck brush or  
a similar implement.
- (3) Rinse with running water.

(If disinfection is needed, use the 5-fold dilution.)



Dedicated dilution bottle  
(5 L dilution container)

Dedicated wide-neck  
spray bottle

### Product Data

Product Name	Bath Cleaner Conc 1 kg
Packaging	1 kg × 4 pouches/case
Case Dimensions*	210 mm × 165 mm × 140 mm
Stacking Limit	3 cases (at 40°C and 90% humidity)
Product Code	291062
JAN Code	4975657232196 (Displayed on the pouch)
ITF Code	34975657232197

\*Product external dimensions are length × width × height. Economy Type

### ⚠ Precautions for Use

- May cause staining of some bathtub materials (marble, etc.). Test for staining first on an inconspicuous part of the bathtub.
- Always read the "Instructions for Use" and "Precautions for Use" printed on the product before use.

### Ingredients Label, etc.

- ◆Acidity/Alkalinity Neutral (5-fold dilution)
- ◆Ingredients Surfactants (linear alkylbenzene sulfonate, fatty acid salt), solvent (glycol-based), metal ion sequesterant, disinfectant, fragrance
- ◆Suggested Amount Use 10 mL of 5-fold diluted detergent on 1 m<sup>2</sup> (Around 10 discharges of the spray gun)

